

# Rapid Radiochemical Methods

---

**Sherrod L. Maxwell**

Senior Fellow Scientist

Savannah River Nuclear Solutions, LLC

Aiken, SC

October 25, 2010

56th Radiobioassay and Radiochemical Measurements Conference

---

Richland, WA

# Approach

---

- **Rapid Radiochemical Methods**
  - Environmental and bioassay sample matrices
  - Emergency response and routine analyses
- **How?**
  - Combine innovative sample preparation methods with rapid column extraction techniques
  - Stacked cartridge technology
    - Sequential separation (5X faster than gravity flow)
    - Rapid flow rates
- **Time is money**

# Gravity Flow vs. Vacuum



# Needs

---

- Rapid methods
  - Rugged, easy to use
- Minimize costs
  - Rapid separations to minimize labor costs
- Meet customer TAT and MDA requirements
  - High chemical yields
  - Optimize sample aliquot sizes as needed
  - Minimal rework
- Eliminate interferences
  - Alpha spectrometry
  - Beta counting
    - Gas proportional counting
    - Liquid scintillation counting

# Extraction Chromatography

---

- Large move toward extraction chromatography in literature in last 10-15 yrs from US to Europe to Japan
- Solvent extraction
  - Mixed waste, less efficient
  - 1995-SRS process lab switch to TEVA, UTEVA from TTA, TIOA -xylene and hexone
  - Maxwell III, S.L. , Rapid actinide-separation methods, Radioactivity and Radiochemistry, 1998, vol. 8, No 4, 36-44
- Ion exchange
  - Less selective
  - Larger resin beds/more acid volume
  - Anion Resin +low energy gamma (I-129)
  - SRS Bioassay lab-switch to TEVA and TRU Resin -1998
    - Higher chemical yields/better alpha peak resolution

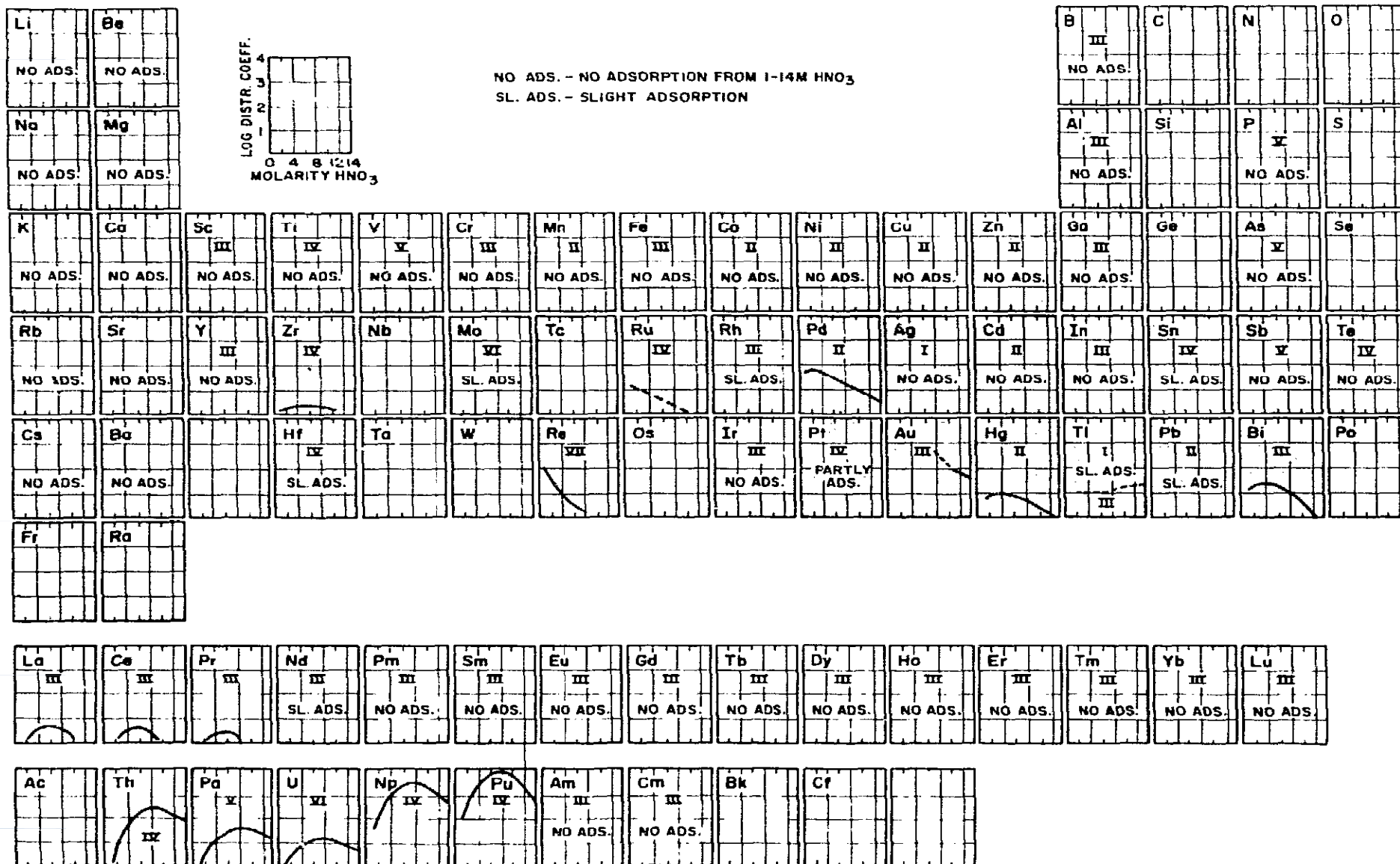


Fig. 1. Removal of Elements from Nitric Acid Solution with Strong-Base Anion Exchange Resin.

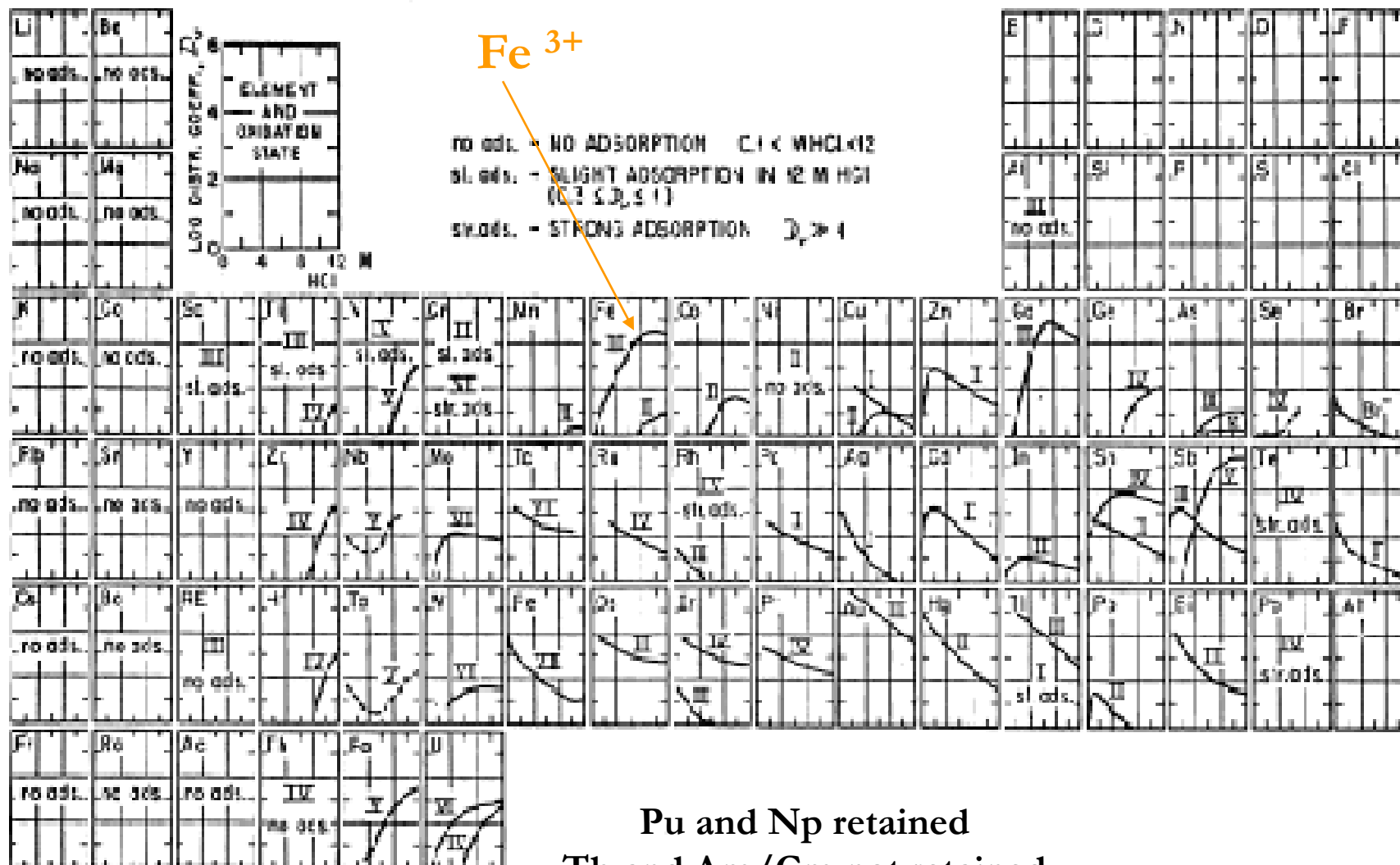
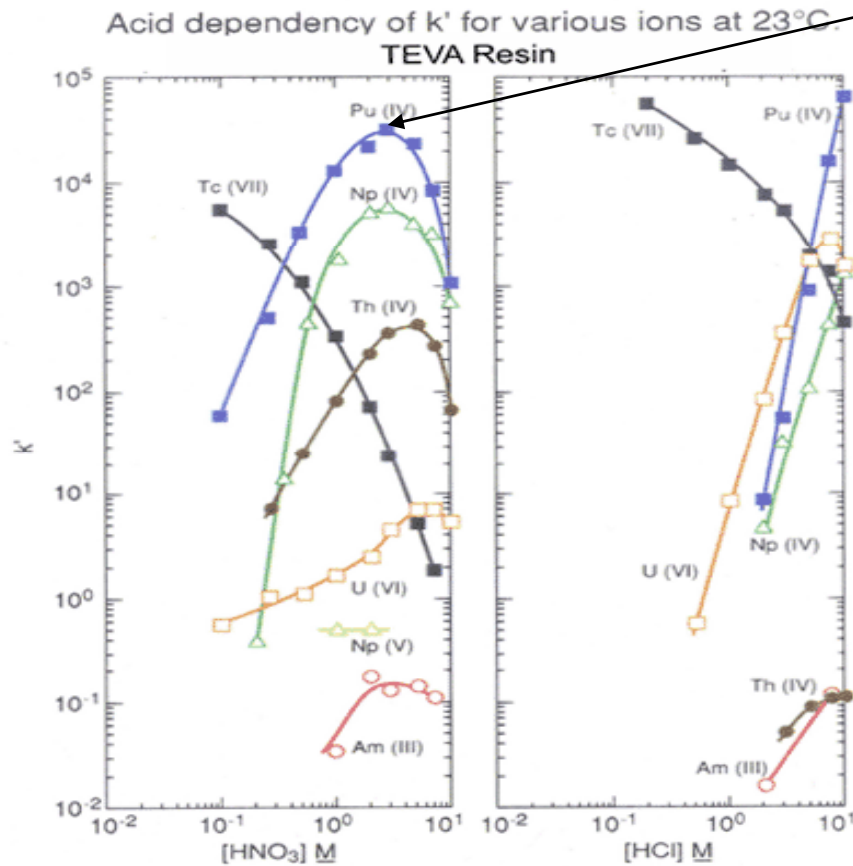


Fig. 6. Anion exchange distribution coefficients in HCl solutions. (Dowex 1-X10) (Ref. 3)



# Why TEVA for Pu/Np?

Figures 2 & 3



High  $k'$  at 3M  $HNO_3$

- Minimal U tailing
- Lower  $HNO_3$
- Good alpha resolution
- Stack cartridges
- Vacuum flow rates
- 2 ml resin
- Acid volumes small

Horwitz, et al. (HP195)



# UTEVA vs. TRU

Figures 2 and 3

Acid dependency of  $k'$  for various ions at 23-25°C.  
UTEVA Resin

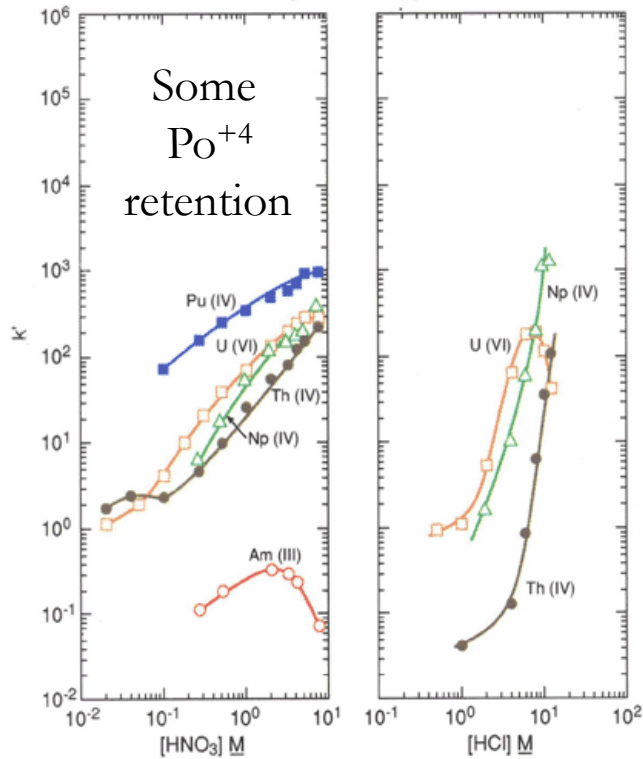
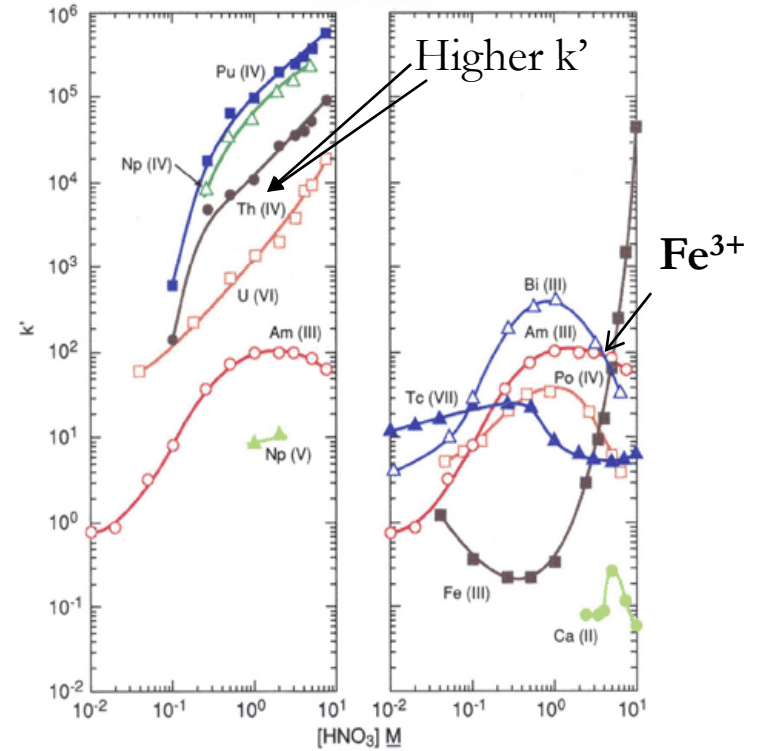
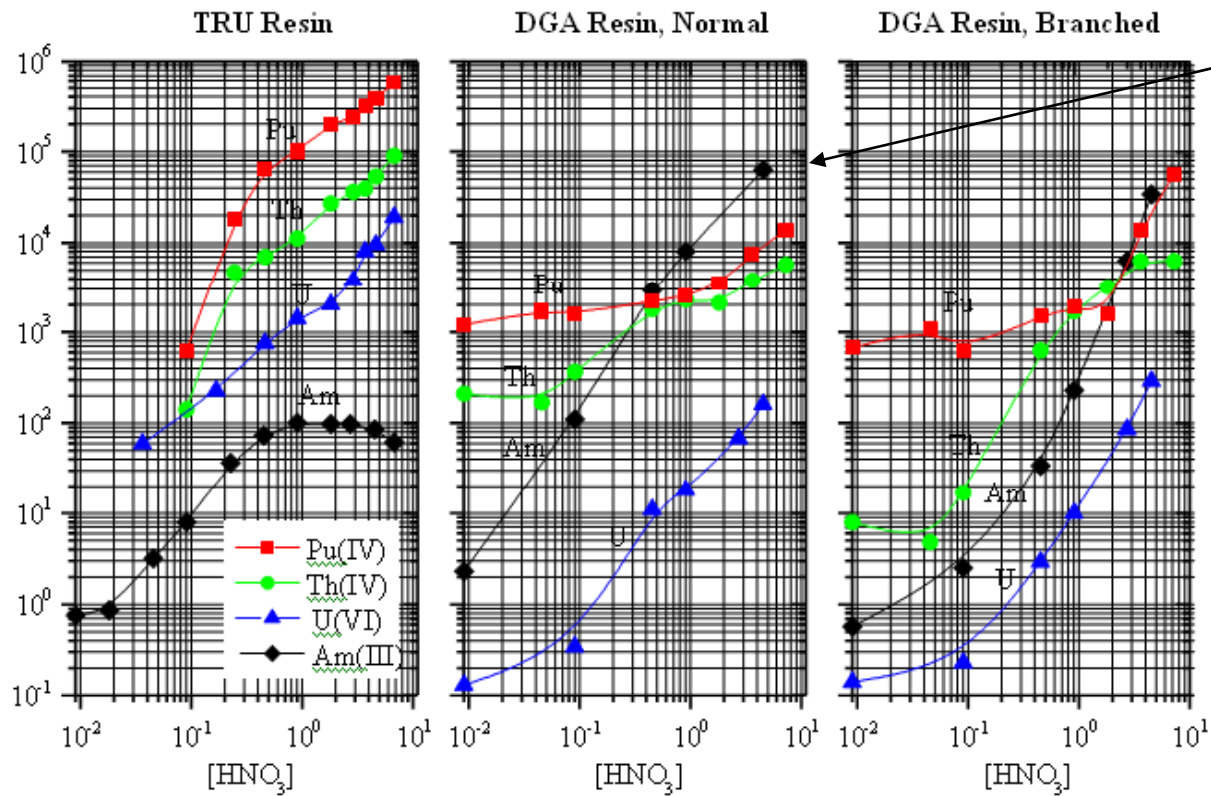


Figure 2

Acid dependency of  $k'$  for various ions at 23-25°C.  
TRU Resin



# TRU vs DGA in HNO<sub>3</sub>

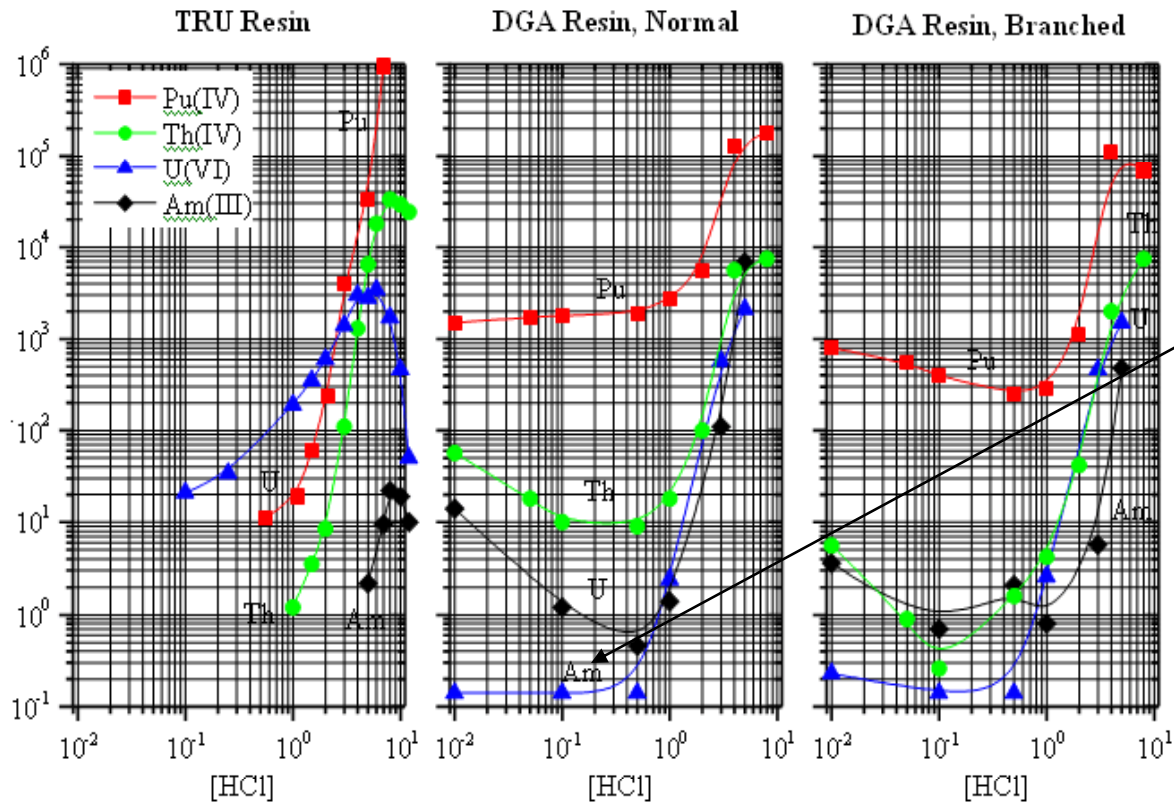


Am  $k'$  30,000

- Great for difficult samples
- Minimal U retention
- Fe<sup>3+</sup> does NOT interfere

Figure 2

# TRU vs DGA in HCl



Easy to strip Am/Cm

Figure 3

# Why do we stack cartridges?

---

- Cut costs/save time
- Actinide separations on a single resin risk fraction contamination
  - TRU (Pu, Np, Am, U, Th)
  - UTEVA (U, Th, Np) +TRU (Pu, Am)
    - Pu-238 and Am-241; Np-237 and U-234
    - Th isotope interference
    - Po-210 removal
- Stacked cartridges
  - TEVA (Pu, Np) + TRU (Am, U) [ +DGA ]
  - Faster than collect load + rinses and reload to next resin

# Publications

---

- **Milk**

Maxwell, S. and Culligan, B., (2009), Rapid method for determination of radiostrontium in emergency milk samples, J. Radioanal. Nucl. Chem, Vol. 279, No.3, 757–760

- **Air Filters**

Maxwell, S., Culligan, B. and Noyes, G. (2010), Rapid separation method for actinides in emergency air filter samples, Appl. Radiation and isotopes, in press

- **Vegetation**

Maxwell, S., Culligan, B. and Noyes, G., Rapid Separation of Actinides and Radiostrontium in Vegetation Samples, J. Radioanal. Nucl. Chem, (2010), 286:273–282, DOI 10.1007/s10967-010-0653-y

- **Animal Tissue**

Maxwell, S. and Culligan, B. (2008) Rapid column extraction method for actinides and strontium in fish and other animal tissue samples, J. Radioanal. Nucl. Chem, 275 (No.3), 605

# Publications

- **Urine and Water**

Maxwell, S. and Culligan, B., (2009), Rapid separation method for emergency water and urine samples, J. Radioanal. Nucl. Chem, 279 (No.3), 901

Maxwell, S. L and Jones, V. D., (2009), Rapid determination of actinides in urine by inductively coupled plasma mass spectrometry and alpha spectrometry: A hybrid approach, Talanta, 80 (No.1), 143

Maxwell, S. (2006), Rapid method for 226Ra and 228Ra analysis in water samples J. Radioanal. Nucl. Chem, 270 (No.3), 651

Maxwell, S. and Culligan, B., (2009), New column separation method for emergency urine samples, J. Radioanal. Nucl. Chem, Vol. 279, No.1, 105

Maxwell, S. (2006), Rapid column extraction method for actinides and 89/90Sr in water samples, J. Radioanal. Nucl. Chem, 267 (No.3), 537

S. L. Maxwell, B.K. Culligan, V.D. Jones, S.T. Nichols, G.W. Noyes, (2010) Rapid determination of 237Np and Pu isotopes in water by inductively-coupled plasma mass spectrometry and alpha spectrometry, J Radioanal Nucl Chem, DOI 10.1007/s10967-010-0825-9

S. L. Maxwell, B.K. Culligan, V.D. Jones, S.T. Nichols, G.W. Noyes, M.Bernard (2010) Rapid determination of 237Np and Pu isotopes in urine by inductively-coupled plasma mass spectrometry and alpha spectrometry, Health Physics Journal, in press



# Publications

---

- **Soil**

Maxwell, S. and Culligan, B. (2006), Rapid column extraction method for actinides in soil, J. Radioanal. Nucl. Chem, 270 (No.3), 699

Maxwell, S. (2008) Rapid method for determination of plutonium, americium and curium in large soil samples, J. Radioanal. Nucl. Chem, 275 (No.2), 395,– U.S. Patent 7,507,583

Maxwell, S., Culligan, B. and Noyes, G. (2010), Rapid method for actinides in emergency soil samples, Radiochimica Acta, in press

S. L. Maxwell, B.K. Culligan, V.D. Jones, S.T. Nichols, G.W. Noyes, M. Bernard (2010) Rapid determination of  $^{237}\text{Np}$  and Pu isotopes in large soil samples by inductively-coupled plasma mass spectrometry and alpha spectrometry, Analytica Acta, in press

Maxwell, S., Culligan, B. and Noyes, G. (2010), Rapid Separation Method for  $^{237}\text{Np}$  and Pu isotopes in Large Soil Samples, Applied radiation and isotopes, in press



# Actinides and Sr-89/90 in Water

- TEVA/TRU/Sr Resin –stacked cartridges
  - One sample preparation
  - Vacuum box flow rates
- Calcium phosphate ppt. (also Sr)
  - Sample aliquot directly in centrifuge tube
  - No water rinse of ppt.
  - No heat\*
  - larger samples need heat to aggregate precipitate
- What about alternate preconcentration methods?

Maxwell III, SL, "Rapid Column Separation for Actinides and Sr-89/90 in Water Samples", *Journal of Radioanalytical and Nuclear Chemistry*, Vol. 267, No. 3, p 537"

Maxwell, S.L, "Rapid Analysis of Emergency Urine and Water Samples", *J. Radioanal. Nucl.Chem.*, 275 (3), (2008)



# Alternate Preconcentration: water, urine

---

- Evaporation
  - Time-consuming
- Iron hydroxide ppt.
  - $\text{Fe}^{3+}$  interferes with TEVA+TRU when Fe in column load solution is oxidized to  $\text{Fe}^{3+}$  with  $\text{Pu}^{4+}$  on TEVA
  - Feasible with:
    - TEVA (Pu/Np)
    - TEVA+DGA (Pu/Am)
    - TEVA+UTEVA (Th/U)
    - TEVA+TRU (Th/U) with reduction to  $\text{Fe}^{2+}$

# Actinides and Sr-90 in Water

Calcium phosphate precipitation

- 1) Redissolve in 8 mL 6M HNO<sub>3</sub> and 8 mL 2M Al(NO<sub>3</sub>)<sub>3</sub>
- 2) Add 0.5 mL 1.5M Sulfamic Acid + 1.25 mL 1.5M Ascorbic Acid
- 3) Add 1 mL 3.5 M Sodium Nitrite

Vacuum box procedure

Beaker rinse: 3mL 3MHN03  
10 mL 3M HN03 to stacked cartridges

Separate cartridges:  
TEVA Resin alone: 10 mL 3M HN03

Th Elution  
20mL 9M HCl

Pu (and/or Np) Elution  
20mL  
0.10M HCl - 0.05M HF - 0.01M TiCl<sub>3</sub>

2 mL TEVA Resin  
(50-100 um)

Add 0.5 mL 30 wt% H<sub>2</sub>O<sub>2</sub>

Cerium fluoride

Alpha spectrometry

2 mL TRU-Resin  
(50-100 um)

Cerium fluoride

2 mL Sr-Resin  
(50-100 um)

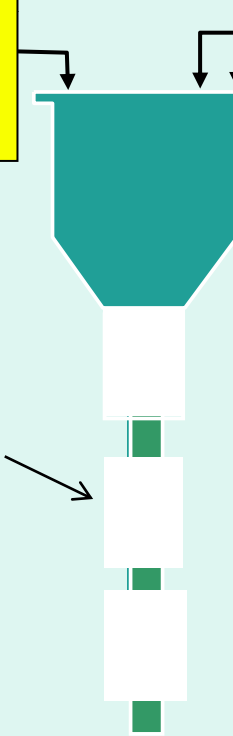
TRU Resin alone:  
Elute Am/Cm with 15 ml 4M HCL/add  
15 ml H<sub>2</sub>O + 50 ug Ce+ 3 ml HF  
12 ml 4M HCl-0.2M HF -0.002M TiCl<sub>3</sub>  
Elute U with 15 ml 0.1M NH<sub>4</sub>HC<sub>2</sub>O<sub>4</sub>

Too much Fe<sup>3+</sup> interferes  
Not a problem for water

Sr Resin alone:  
15 mL 8MHN03  
10 mL 0.05M strip Sr

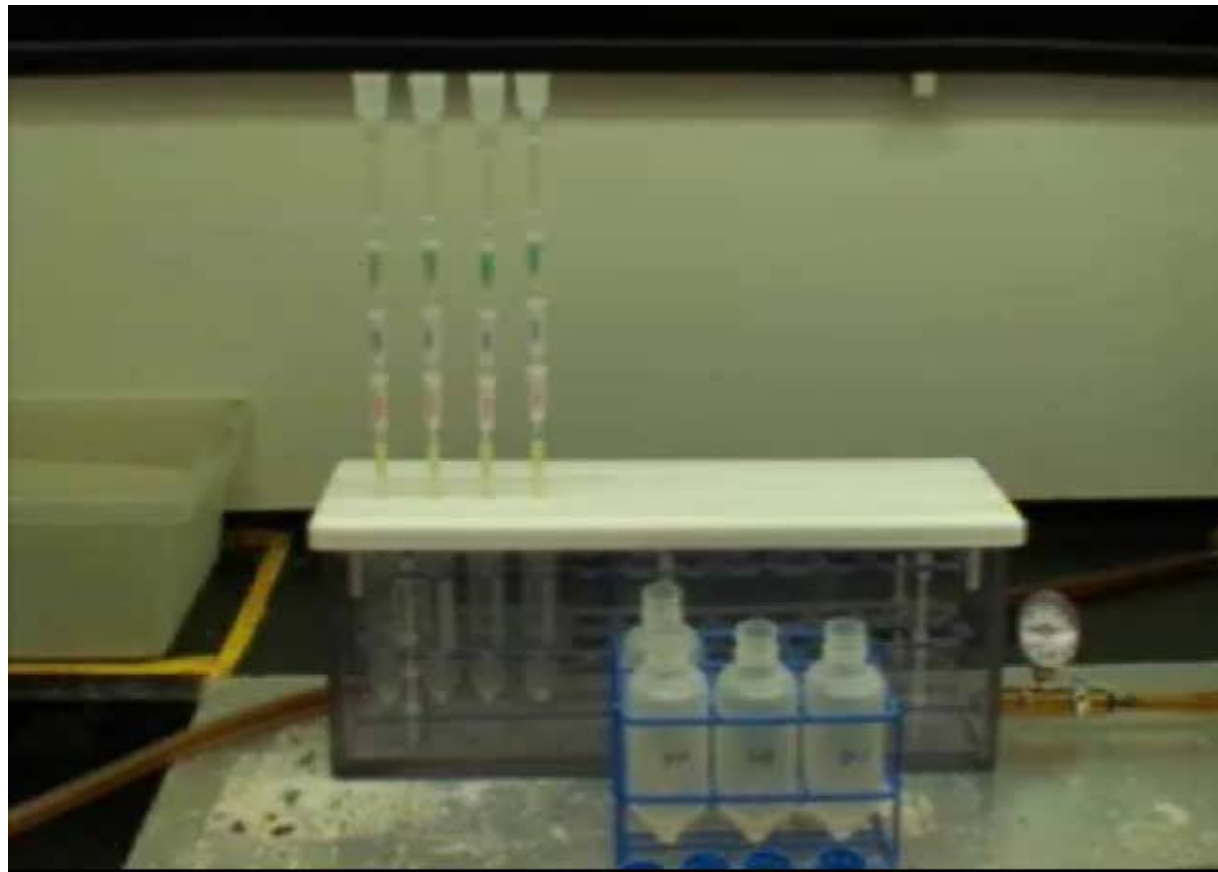
Evaporate/ beta counting

Enhanced Po-210  
removal



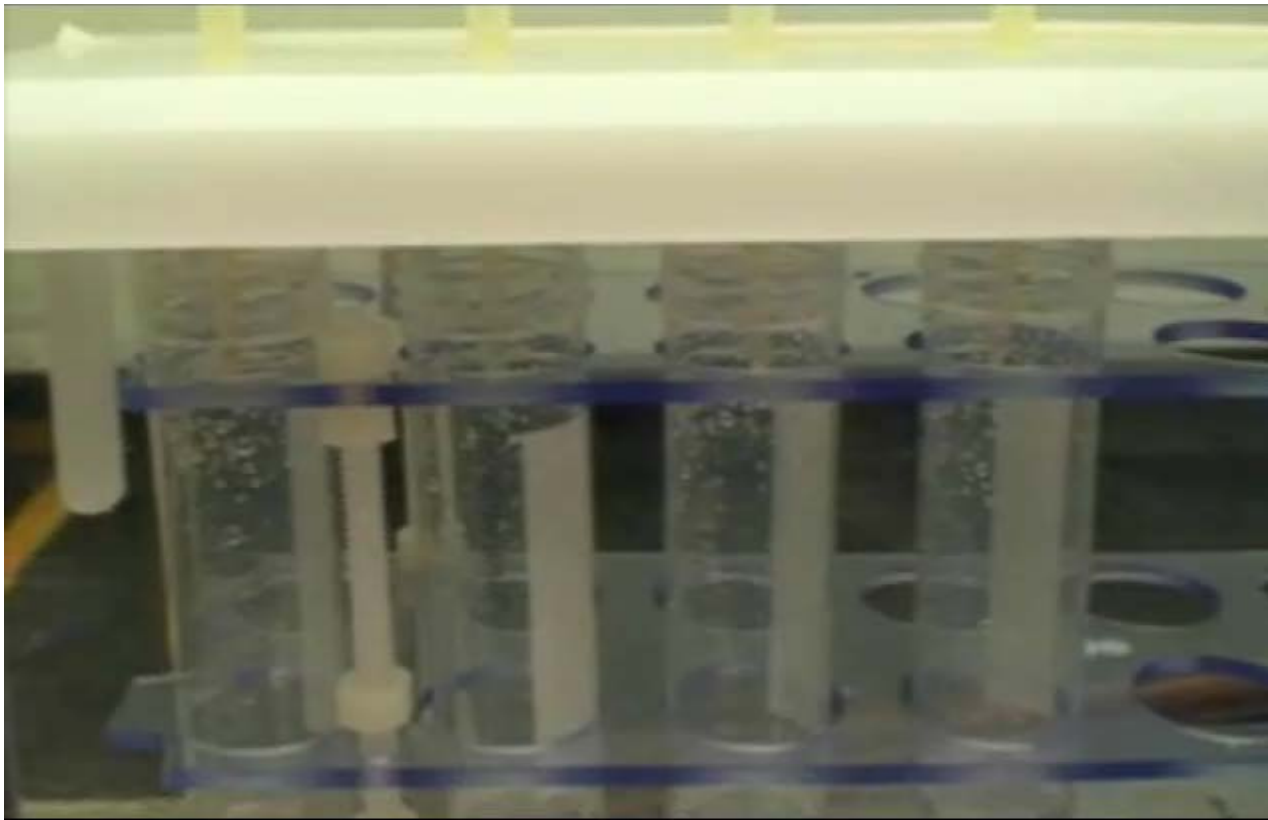
# Routine Flow Rates

**Load solution ~ 1 drop per second**



# Rinse Solution Flow Rates

~ 1-2 drops per second



# Approach

---

- Pu/Np in water/urine
  - Calcium phosphate or direct urine aliquot
  - TEVA
  - TEVA then Pu on DGA
- Main session
  - ICP-MS and alpha spectrometry
  - Enhanced  $^{238}\text{U}$  removal

S. L. Maxwell, B.K. Culligan, V.D. Jones, S.T. Nichols, G.W. Noyes, (2010) Rapid determination of  $^{237}\text{Np}$  and Pu isotopes in water by inductively-coupled plasma mass spectrometry and alpha spectrometry, J Radioanal Nucl Chem, DOI 10.1007/s10967-010-0825-9

S. L. Maxwell, B.K. Culligan, V.D. Jones, S.T. Nichols, G.W. Noyes, M. Bernard (2010) Rapid determination of  $^{237}\text{Np}$  and Pu isotopes in urine by inductively-coupled plasma mass spectrometry and alpha spectrometry, Health Physics Journal, in press

# Rapid urine method: Dose mitigation

---

- Puncture wound
  - Sample received 6/16/10
  - Results in 6 hrs
  - 8 results in first 10 days following incident
  - Mitigate dose/guide medical treatment
- TEVA
  - Calcium phosphate option (prior to chelation)
  - Evaporation/wet-ashing to destroy DTPA chelation agent



# Puncture Wound Incident Lab Support

---

- Sample receipt puncture wound 6/16/10
- NRIP emergency method <sup>1</sup> results (EM lab) 6 hrs.
- Rapid Bio Lab results (initial) 4 days
- Rapid Bio Lab <sup>2</sup> results (final) 7 days

<sup>1</sup> NRIP method provided HPT 8 data points in first 10 days into event to support dose mitigation (tissue excision and chelation therapy)

<sup>2</sup> DOELAP accredited method official results 7 days earlier than 14 day TAT requirement for Incident samples  
Method: Wet-ashing with HNO<sub>3</sub> and H<sub>2</sub>O<sub>2</sub> to destroy chelation agent + TEVA Resin (vacuum box)

# Post Core Punch Tissue Excision



Initial core punch 13,976 dpm  $^{238}\text{Pu}$



(3.5 hrs post injury)

# Effect of Chelation Agent

Aliquot ml	Sample Prep	$^{242}\text{Pu}$ Tracer Yield %	$^{238}\text{Pu}$ (pCi/ml)	Uncert (pCi/ml)
25	evap/wet-ash	103.5	123	20
25	evap/wet-ash	99.8	126	20
25	calcium phosphate/wet-ash ppt.	55.7	84	16
25	calcium phosphate/wet-ash ppt.	49.7	84	16
25	calcium phosphate/ no wet-ash ppt.	21.9	86	22
25	calcium phosphate/ no wet-ash ppt.	27.0	102	22

# Approach

---

- Actinides (Pu, Np, Am, Cm, U)
  - Soil (0.5-2g)
    - Rapid sodium hydroxide fusion (10 minutes)
      - eliminates refractory particles
      - more rugged; may be faster than acid attack
    - Iron/titanium hydroxide ppt. preconcentration
    - Lanthanum fluoride ppt. matrix removal
      - La removed on DGA
      - Reduces Fe levels
    - TEVA Resin (Pu, Np) + TRU Resin (U) + DGA (Am, Cm) Resin
      - Pu, Np only-TEVA
      - If U not needed, TEVA (Pu, Np)+DGA (Am, Cm) only
    - Alpha spectrometry
  - Adapted to 50 ml tubes

# The Magic of DGA

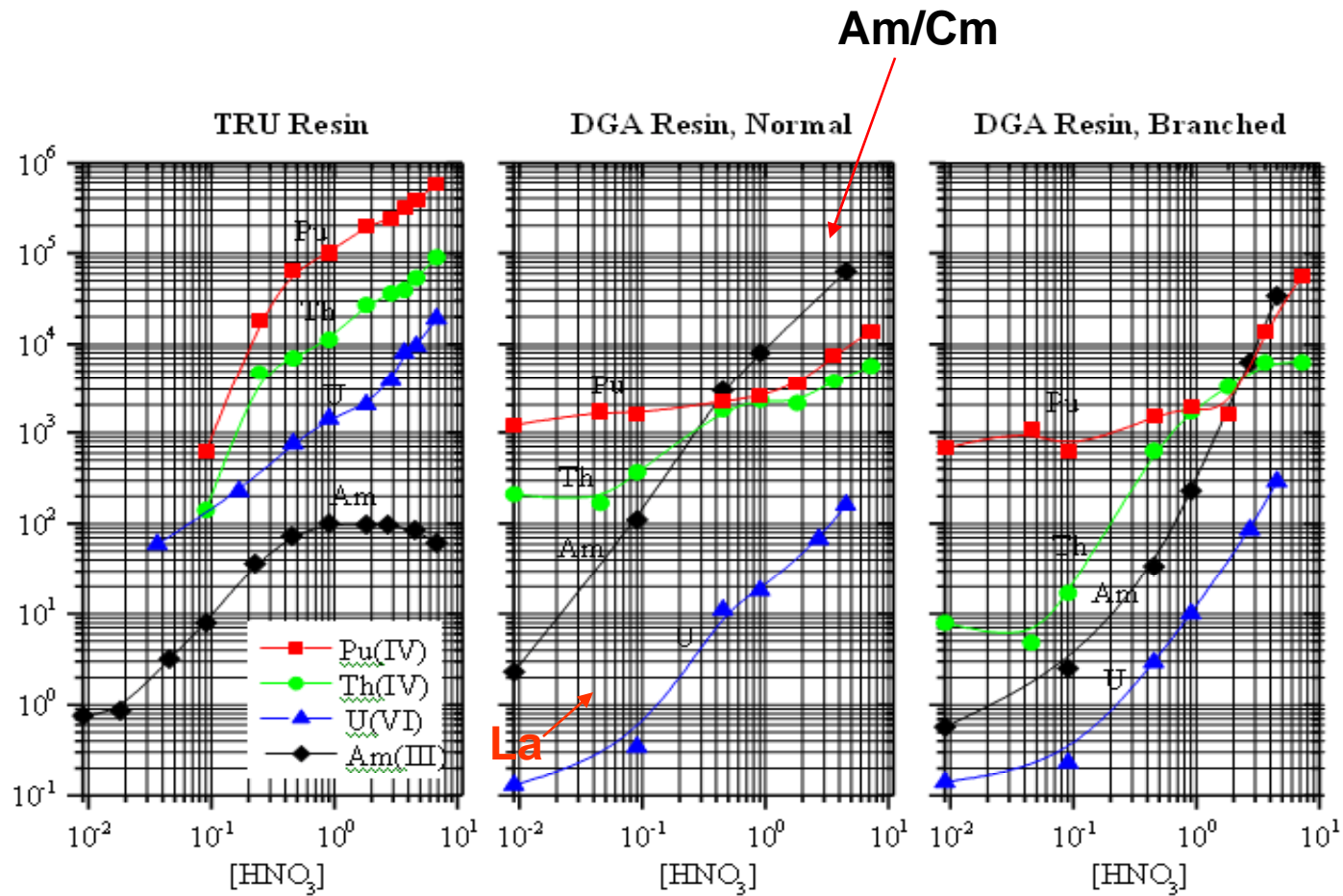
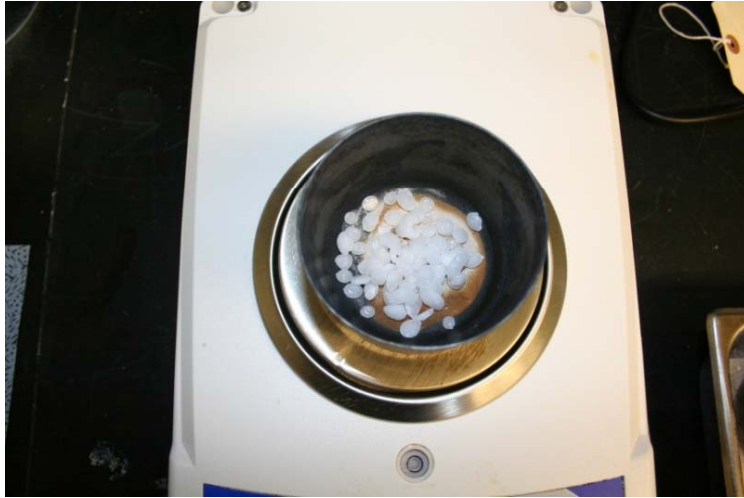


Figure 2

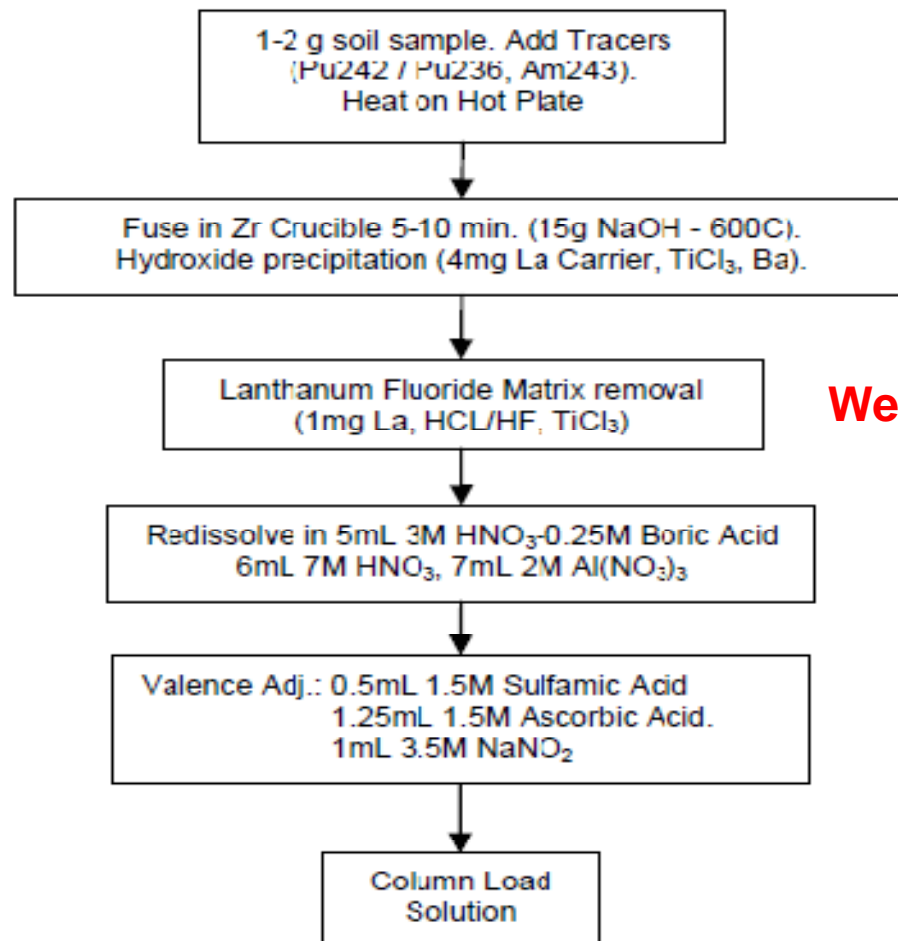
Source: [http://www.eichrom.com/products/info/dga\\_resin.cfm](http://www.eichrom.com/products/info/dga_resin.cfm)



# Rapid Fusion



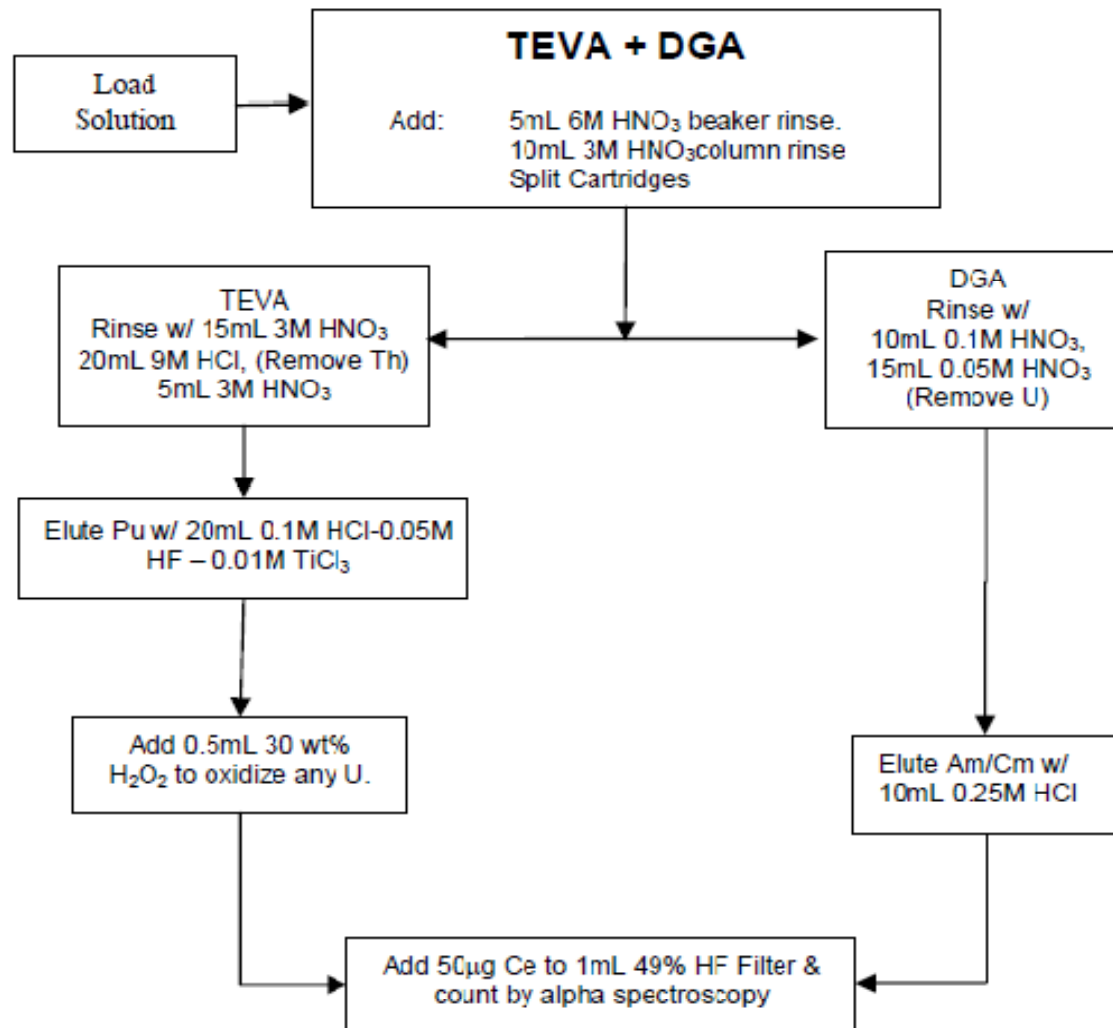
# Rapid Pu/Am in soil



**We can adapt to 50 ml tubes**



# Rapid Pu/Am in soil (TEVA+DGA)



# Rapid Fusion TEVA+DGA (50 ml tubes)

Sample ID	<sup>242</sup> Pu Yield (%)	<sup>239</sup> Pu Reference Value (Bq Smp <sup>-1</sup> )	Measured Value (Bq Smp <sup>-1</sup> )	Difference (%)	Reference
1	91.9	82.6	85.6	3.6	MAPEP 18
2	89.5	82.6	87.6	6.0	MAPEP 18
3	86.7	82.6	89.9	8.8	MAPEP 18
4	92.2	82.6	83.5	1.1	MAPEP 18
5	87.6	82.6	94.5	14.4	MAPEP 18
6	95.8	82.6	84.9	2.8	MAPEP 18
Avg	90.6			6.1	
% RSD	3.7				

# Rapid Fusion TEVA+DGA (50 ml tubes)

Sample ID	<sup>242</sup> Pu Yield (%)	<sup>238</sup> Pu Reference Value (Bq Smp <sup>-1</sup> )	Measured Value (Bq Smp <sup>-1</sup> )	Difference (%)	Reference
1	91.9	72.8	72.4	-0.6	MAPEP 18
2	89.5	72.8	77.1	5.9	MAPEP 18
3	86.7	72.8	69.6	-4.5	MAPEP 18
4	92.2	72.8	68.6	-5.8	MAPEP 18
5	87.6	72.8	77.7	6.7	MAPEP 18
6	95.8	72.8	72.4	-0.6	MAPEP 18
Avg	90.6			0.2	
% RSD	3.7				

# Rapid Fusion TEVA+DGA (50 ml tubes)

Sample ID	<sup>243</sup> Am Yield (%)	<sup>241</sup> Am Reference Value (Bq Smp <sup>-1</sup> )	Measured Value (Bq Smp <sup>-1</sup> )	Difference (%)	Reference
1	85.7	127.2	131.7	3.6	MAPEP 18
2	84.6	127.2	135.1	6.2	MAPEP 18
3	89.0	127.2	134.7	5.9	MAPEP 18
4	96.9	127.2	142.5	12.0	MAPEP 18
5	94.4	127.2	135.3	6.3	MAPEP 18
6	91.8	127.2	141.7	11.4	MAPEP 18
Avg	90.4			7.6	
% RSD	5.4				

# Approach

---

- Pu, Np in Soil (10g-100g)
  - Large soil aliquot needed to reach low MDA
  - Need effective soil matrix removal
  - Chemical yields can be a problem
- Main session
  - ICP-MS and alpha spectrometry

S. L. Maxwell, B. K. Culligan, and G. W. Noyes, Rapid Separation Method for  $^{237}\text{Np}$  and Pu isotopes in Large Soil Samples, *Applied Radiation and Isotopes*, 2010, in press

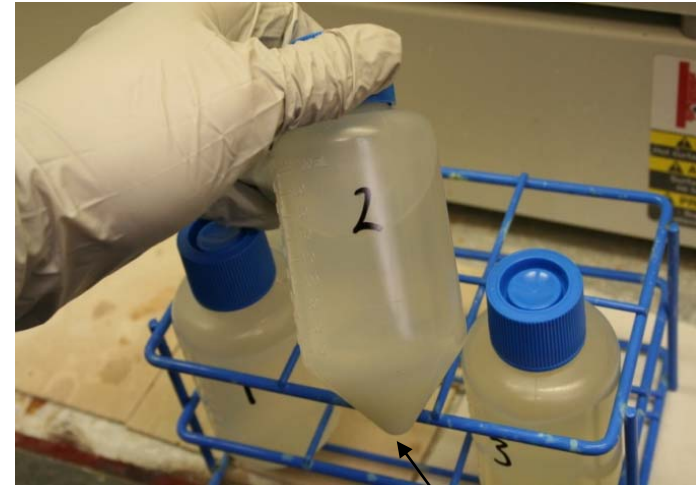
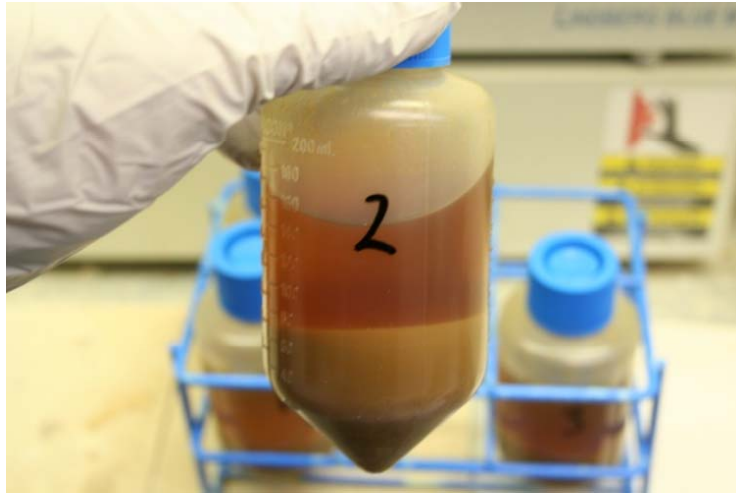
S. L. Maxwell, B. K. Culligan, V.D. Jones, S. T. Nichols, M. A. Bernard, G. W. Noyes, Determination of  $^{237}\text{Np}$  and Pu isotopes in Large Soil Samples by Inductively-Coupled Plasma Mass Spectrometry, *Analytica Chimica Acta*, 2010 in press

# Am in Large Soil

- 100-250g
  - Leach, Fe/Ti OH, LaF3
  - TRU+DGA
  - TEVA-SCN



# 250g soil samples



LaF<sub>3</sub> ppt



# <sup>241</sup>Am Results on 100g Samples

Sample ID	<sup>243</sup> Am Yield (%)	<sup>241</sup> Am Reference Value (mBq smp <sup>-1</sup> )	Measured Value (mBq smp <sup>-1</sup> )	Difference (%)	Reference
1	81.4	89.8	90.7	0.9	MAPEP 21
2	92.8	89.8	77.0	-14.3	MAPEP 21
3	104.4	89.8	77.3	-13.9	MAPEP 21
4	97.5	89.8	82.5	-8.1	MAPEP 21
5	89.2	89.8	82.1	-8.5	MAPEP 21
6	87.1	89.8	90.3	0.5	MAPEP 21
Avg	92.1			-7.2	
% RSD	8.8				

# <sup>244</sup>Cm Results on 100g Samples

Sample ID	<sup>243</sup> Am Yield (%)	<sup>244</sup> Cm Reference Value (mBq smp <sup>-1</sup> )	Measured Value (mBq smp <sup>-1</sup> )	Difference (%)	Reference
1	81.4	36.1	45.1	24.9	MAPEP 21
2	92.8	36.1	37.0	2.4	MAPEP 21
3	104.4	36.1	34.3	-4.9	MAPEP 21
4	97.5	36.1	39.4	9.2	MAPEP 21
5	89.2	36.1	32.8	-9.1	MAPEP 21
6	87.1	36.1	40.7	12.7	MAPEP 21
Avg	92.1			5.9	
% RSD	8.8				

# Summary

---

- Rapid radiochemical methods
  - Needed for emergency response
    - RDD, nuclear accident or occupational uptake
  - Needed for routine analyses to cut costs
- Stacked cartridges saves us time and money
- Actinides
  - TEVA+TRU (water, urine, air filters: Pu, Np, Am, Cm, U)
  - TEVA+TRU+DGA (soil, animal tissue, vegetation: Pu, Np, Am, Cm, U)
  - Add Sr Resin for Sr-89/90
- Other options
  - Pu, Np      TEVA (extra U removal from Pu-DGA for ICP-MS)
  - Pu, Am      TEVA+ DGA
  - Th/U        TEVA+ UTEVA or TEVA+TRU