

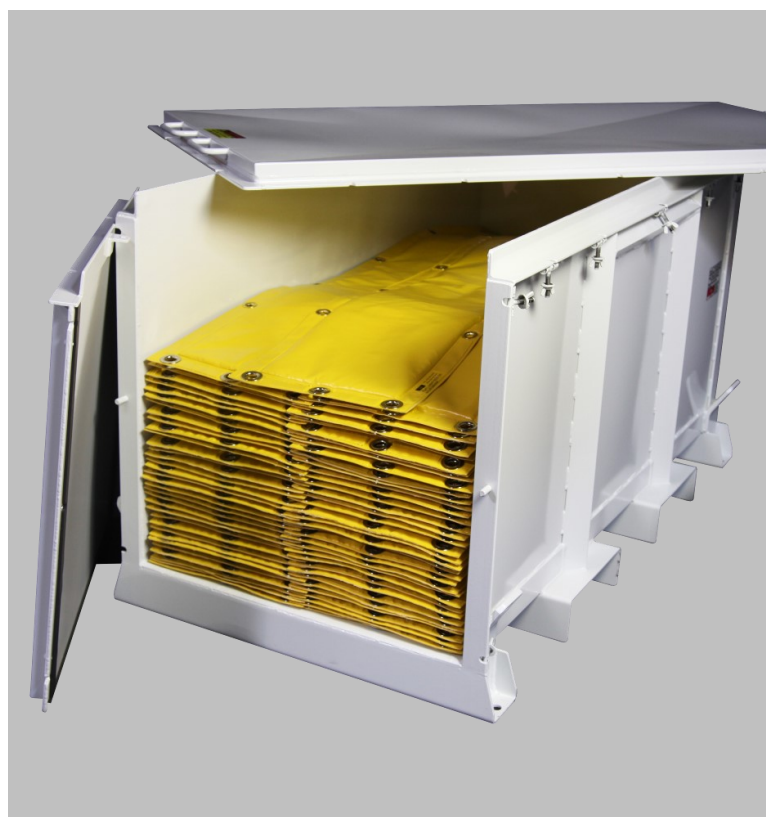
Lead Blankets

npo®

A BRAND OF
EICHROM TECHNOLOGIES



Standard,
Custom,
Racks &
Accessories



Lead Blankets

Standard



A BRAND OF
EICHROM TECHNOLOGIES

One of NPO's most recognized shielding products is the lead wool blanket. Built to last, the proven strength and durability of these blankets are found within their formulation and construction. Each blanket is layered in continuous lead wool rope, minimizing gaps and increasing attenuation.

NPO's lead blankets are highly flexible and are manufactured in a multitude of sizes, shapes and weights for effective shielding around components. The lead blankets are used in countless applications across the nuclear industry, yet still, every day, NPO is challenged with and defines new solutions for its customers' unique applications.

Part Number	Pounds Per Square Foot	Size (ft)	Weight (lb)	Covering Material
L5PHY02122	10	1 X 2	20	PVC Laminate
L5PHY02123	10	1 X 3	30	PVC Laminate
L5PHY02124	10	1 X 4	40	PVC Laminate
L5PHY02125	10	1 X 5	50	PVC Laminate
L5PHY02126	10	1 X 6	60	PVC Laminate
L5SHY052243	10	2 X 3	60	PVC Laminate
L5PHY52122	15	1 X 2	30	PVC Laminate
L5PHY52123	15	1 X 3	45	PVC Laminate
L5PHY52124	15	1 X 4	60	PVC Laminate
L5SHY552125	15	1 X 5	75	PVC Laminate
L5SHY552126	15	1 X 6	90	PVC Laminate
L5SHY552243	15	2 X 3	90	PVC Laminate
L52GS052122	10	1 X 2	20	Coated Fiberglass
L52GS052123	10	1 X 3	30	Coated Fiberglass
L52GS052124	10	1 X 4	40	Coated Fiberglass
L52GS052125	10	1 X 5	50	Coated Fiberglass
L52GS052126	10	1 X 6	60	Coated Fiberglass
L52GS552122	15	1 X 2	30	Coated Fiberglass
L52GS552123	15	1 X 3	45	Coated Fiberglass
L52GS552124	15	1 X 4	60	Coated Fiberglass
L52GS552125	15	1 X 5	75	Coated Fiberglass
L52GS552126	15	1 X 6	90	Coated Fiberglass

Lead Blankets

Standard

npo[®]

A BRAND OF
EICHROM TECHNOLOGIES



handles

Handles set on the long sides of the blankets allow workers to lift and place blankets with ease. Blankets can now be easily and quickly moved from storage to hooks or racks in the areas they are needed. The larger borders on these blankets make for handles that can easily accommodate a gloved hand.

- Faster and easier handling
- More maneuverability
- Carry a blanket with one hand
- Better leverage for installation
- Standard for all blankets 60 lb or lighter

standard printing

- Weight of each blanket printed on the front
- Part and lot numbers for quick identification

custom printing

- Show assembly order, instructions, or locations of magnets
- Print extra details specific the application (unit#, project name, plant, utility, etc.)

larger grommets

Compared to conventional lead blankets, NPO premium lead blankets have larger grommets making installation onto hooks and cable ties quicker and easier.

Lead Blankets

Custom Designed



A BRAND OF
EICHROM TECHNOLOGIES



Magnetic labeled curved blankets



Custom shape, grommet spacing with D-ring loops

Lead wool blankets can be designed and made with nearly any 2D layout imaginable. Add magnets, Velcro, cutouts, grommets, and cinch straps, and create a blanket truly designed specifically to get the job done.



Overlapping Velcro blankets



No borders, custom label, custom shaped



steam generators

Sludge accumulates on the secondary side of steam generators and must be removed to prevent pitting, intergranular stress corrosion cracking and other forms of tube degradation.

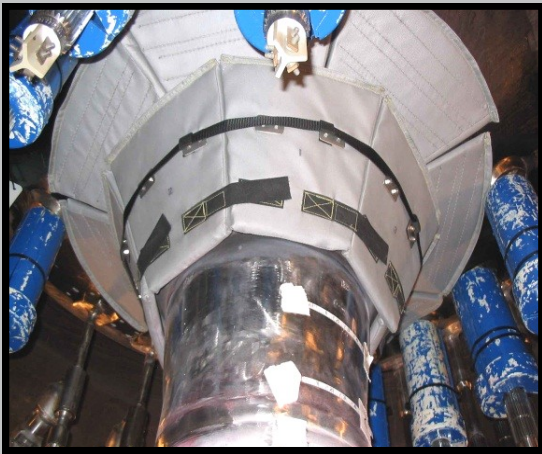
During the sludge lancing process, work is performed using the highly radioactive hand holes, and workers spend a significant amount of time in close proximity to the generator's outer surface. NPO customized a shielding solution to minimize dose during this application.

Lead Blankets

High Temperature



A BRAND OF
EICHROM TECHNOLOGIES



Silicone fiberglass blankets

Available in various sizes, shapes and weights, NPO's high temperature coverings can withstand continuous temperatures of 550+ degrees Fahrenheit (288 degrees Celsius). The blankets are typically used in high temperature applications and have been used as permanent shielding in some facilities.

high temp dry cask lid shield

NPO provides custom designed dry cask canister lid shielding that fits any model including Holtec, TransNuclear, and NAC International.

- Implemented by over 12 sites in the US
- 60 % gamma attenuation (Co-60)
- +500°F continuous service temp max
- 35 lb per piece

lead wool magnetic shielding tiles

These magnetic tiles allow for quick installation on any carbon steel surface while offering a significant dose reduction. The tiles are easy to use and are moldable to slightly curved surfaces. Low profile hand-holds allow for easy transport to the shielding location. Used in conjunction with other tiles, minimal streaming of radiation can be achieved.



High temperature blankets come in all standard lead blanket sizes

Lead Blankets

Cargo Nets and Hooks

npe[®]

A BRAND OF
EICHROM TECHNOLOGIES



cargo netting

Substitute scaffolding with lattice webbing and integral swivel hooks. These systems are custom manufactured to work with pipes, tanks, or other applications.

Features

- Grommets and hooks can hold 400 lb each
- Webbing strips can hold up to 4000 lb
- Multiple hook locations allow for various size blankets

Benefits

- Save scaffolding space and money by hanging blankets directly on pipes and tanks.
- Configure blankets to exact shape with swivel hooks
- Create large shield walls that are easily hoisted into place
- Minimal storage space required

s-hooks

The stainless steel swivel hooks are used in place of scaffolding by hanging off existing structures. S-Hooks can also be connected to 4,000-pound capacity lattice webbing for applications such as upper head shield support.



1955 University Lane, Lisle, IL 60532 • 630.963.0320
Fax: 630.963.1928 • www.eichrom.com

Lead Blankets

Racks

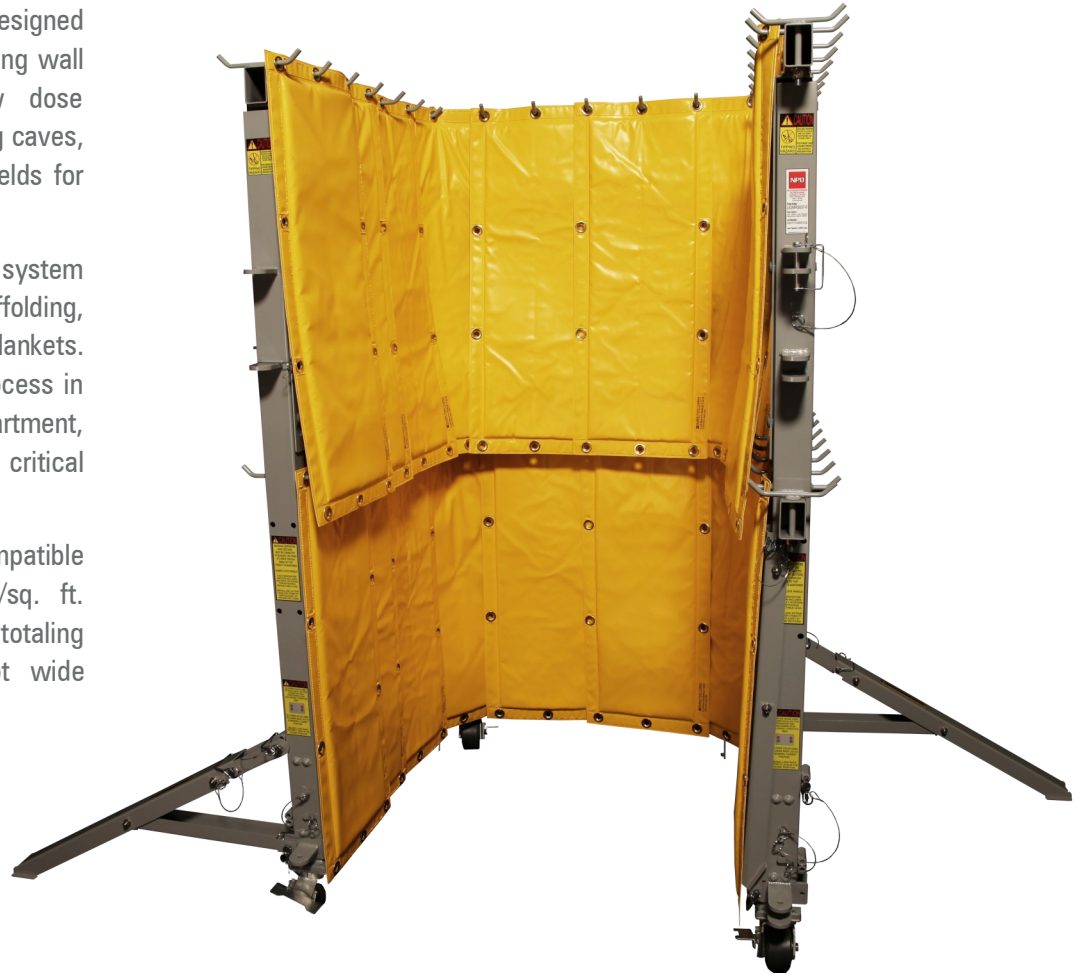


A BRAND OF
EICHROM TECHNOLOGIES

NPO's serpentine system is designed to provide virtually any shielding wall configuration, including low dose waiting areas, portable frisking caves, shadow shield walls, and shields for rad materials transfers.

This sturdy and adjustable system was designed to replace scaffolding, currently used to hang lead blankets. By placing the installation process in the hands of the RP department, setup time and potentially critical path time is saved.

NPO serpentine racks are compatible with 10#/sq. ft. and 15#/sq. ft. blankets, up to six layers and totaling 3,060 pounds per three-foot wide section.



Lead Blankets

Contact Us

npo[®]

A BRAND OF
EICHROM TECHNOLOGIES

npo

As a 35+ year veteran company to the shielding industry, employees at NPO attribute a great deal of our success to the partnerships established with our customers. At NPO, we work synergistically with our customers, adapting product designs that conform to their specifications. In fact, over the last three years alone, NPO has customized 199 new product parts to meet the unique ALARA challenges our customers have faced. We would like to extend this partnership to your team as well. Please contact us today to discuss how NPO can support you.

1955 University Lane

Lisle, IL 60532

(630) 963-0320

(800) 422-6693

www.eichrom.com

